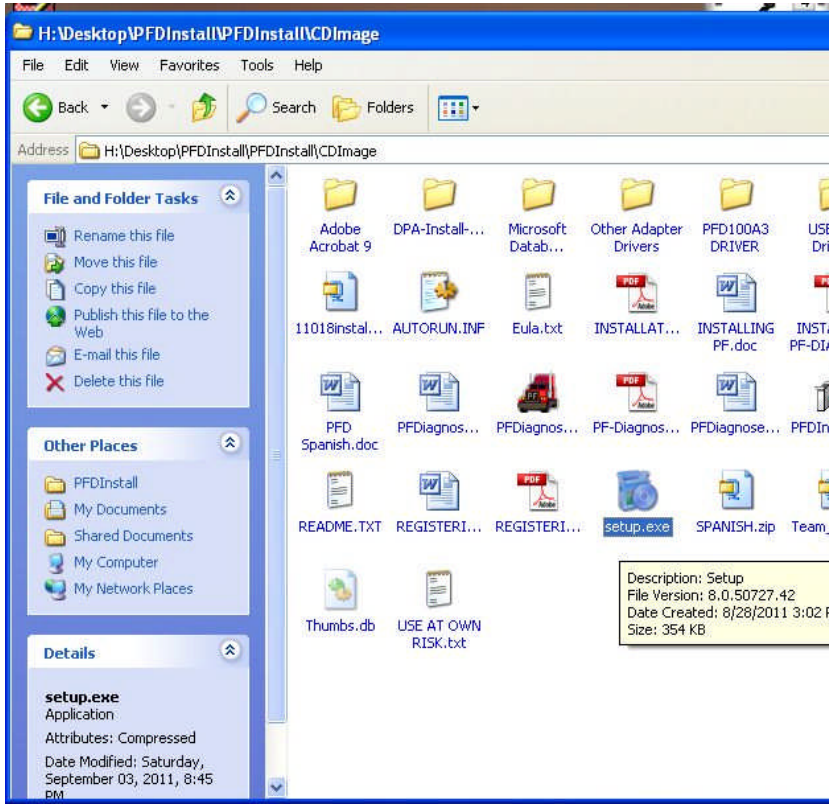


INSTALLING PF-Diagnose

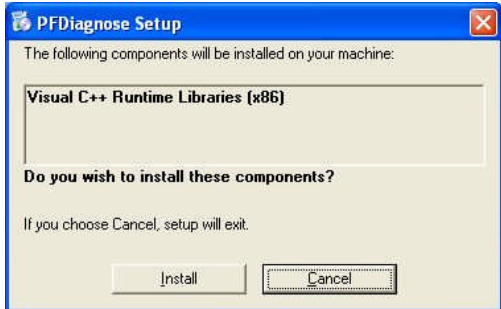
Below is a typical install

Select Setup.exe

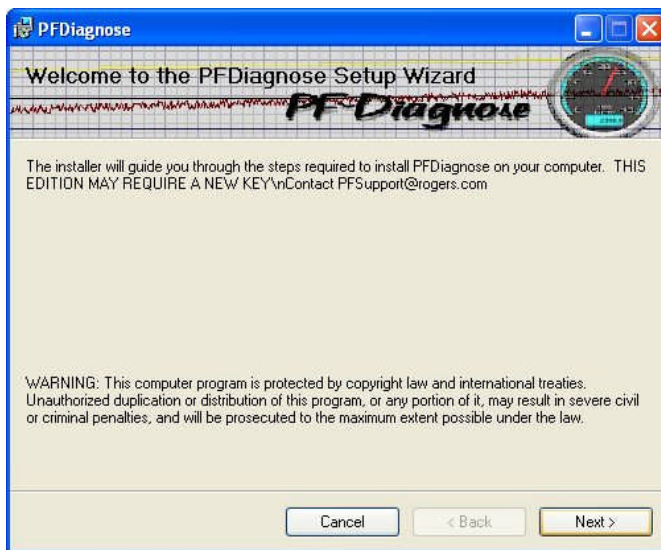
REVISED
By Don at 8:11 pm, 10/4/11



Select Install for the C++ Runtime Libraries



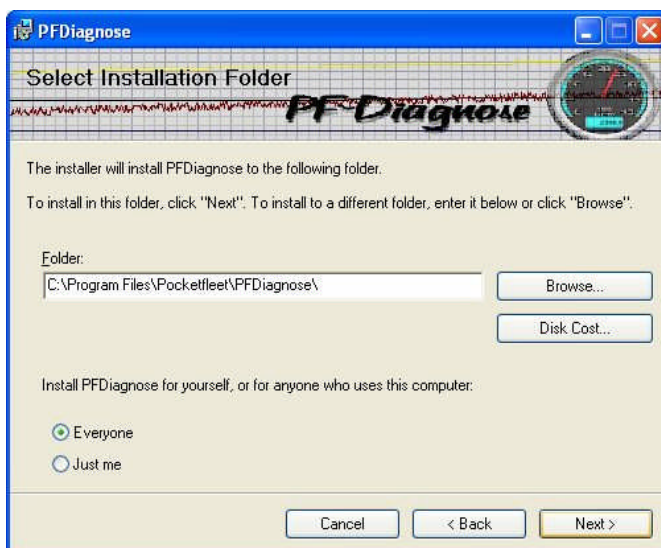
Select Next



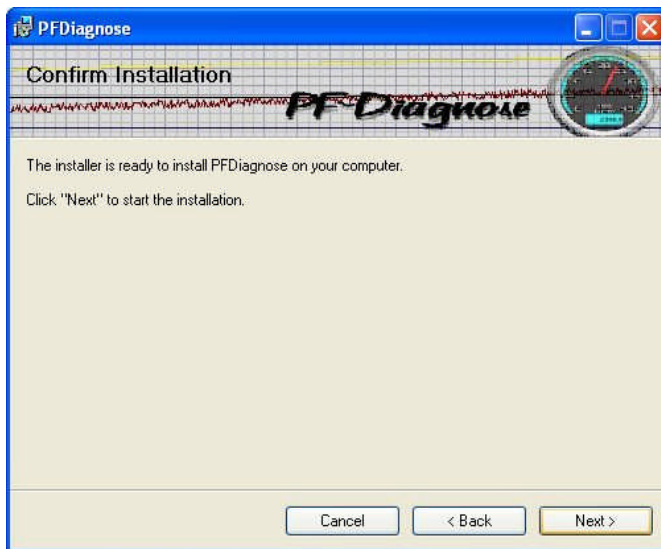
Select I AGREE if you agree then select next



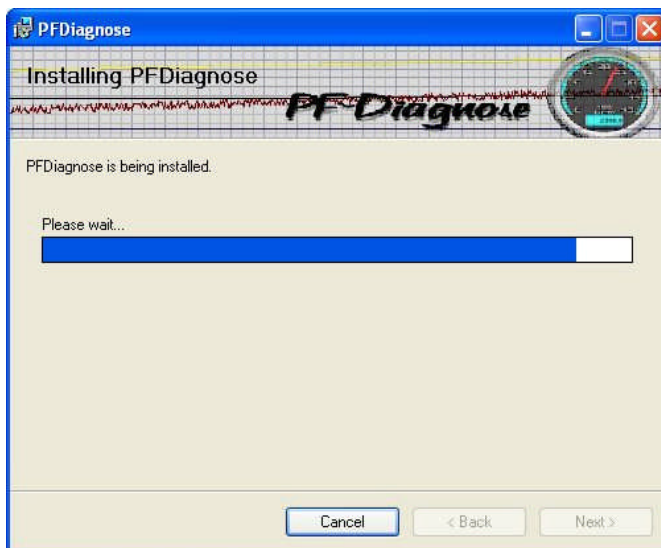
Leave all of the selections as they are, do not change folders or do not select Just Me.



Select Next



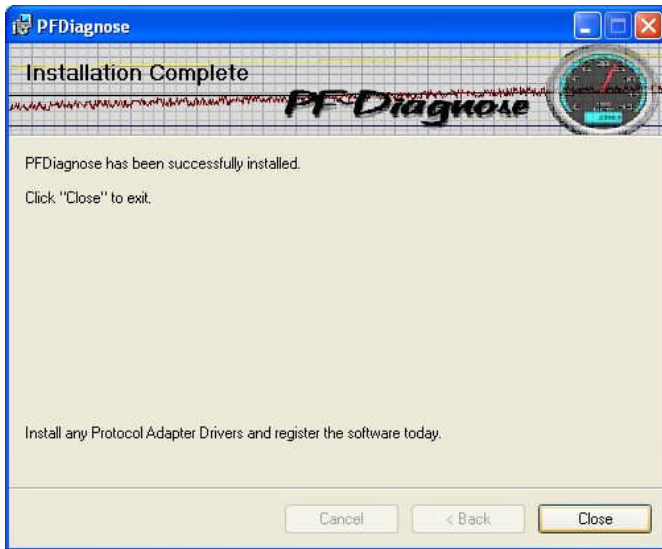
The program will Install



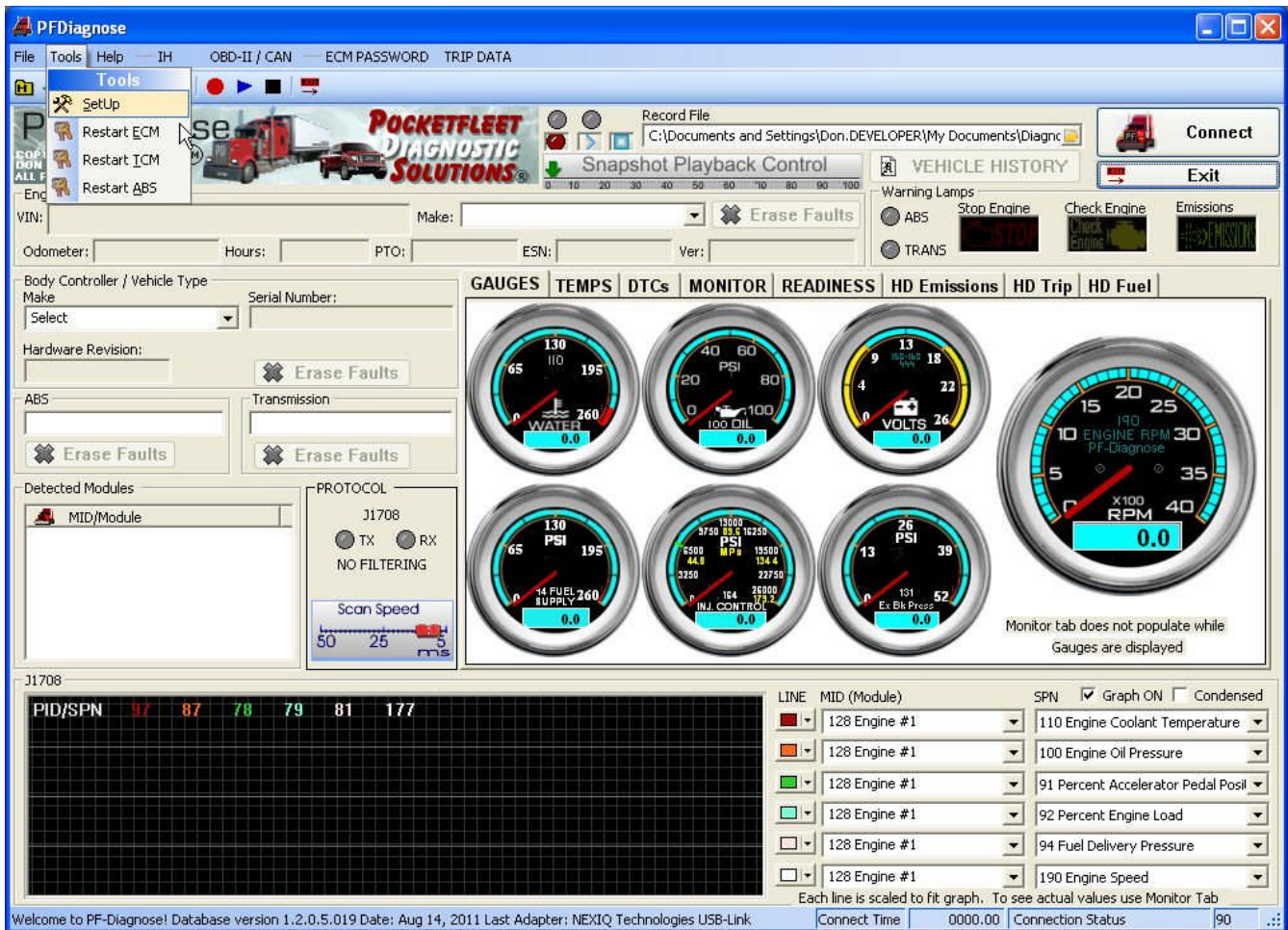
Select Next, This installs the default adapter driver, it may say Maintenance or install, either way just follow the defaults bu selecting Next



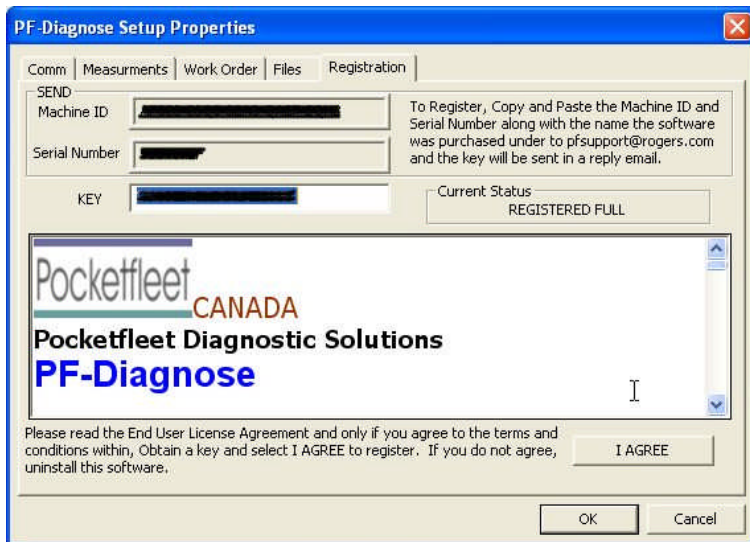
The install is complete so select Close



Start PF-Diagnose then enter setup

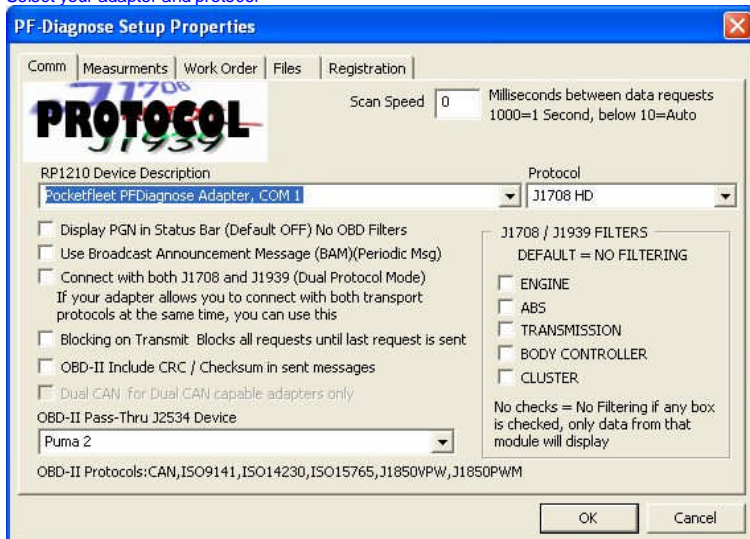


Send me the Machine ID and Serial Number and I will send you the Key



Exit and Restart, Enter Setup again

Select your adapter and protocol



If you use a Serial to USB adapter, You need to configure it to COM 2 or 3 or 4, whatever matches the driver name selected above, in this case, COM 1, if your laptop has a serial port, it should be set to COM 1 and you should use it

You should now be ready to connect

Attach the Adapter, connect it to the truck, turn the key on in the truck and select CONNECT